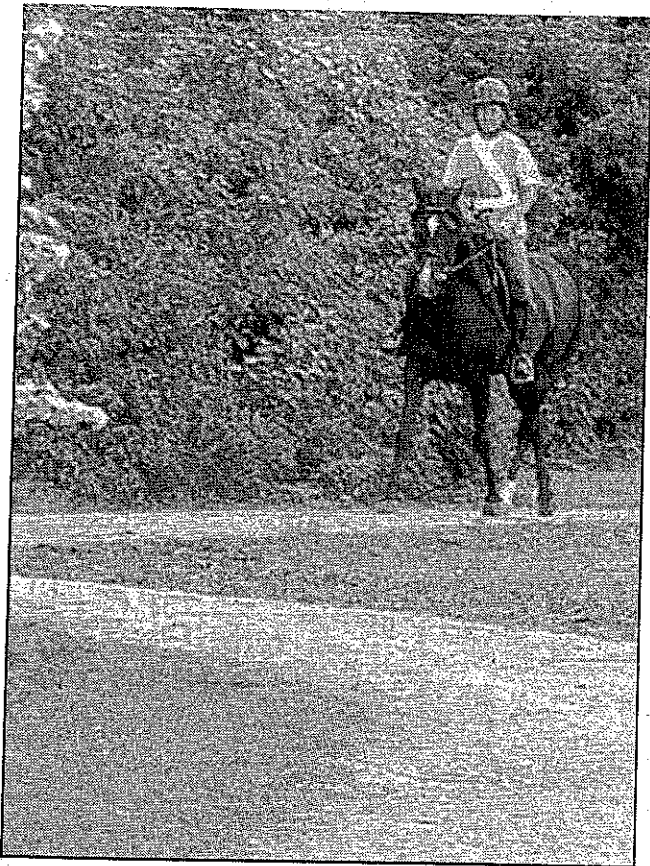


L.E.P.

31/7/13



IMPROVEMENTS: Riders from Ulnes Walton Bridleways Association at Lostock Valley in Leyland

Funding for path project

By LAURA WILD

laura.wild@lep.co.uk
[@LAURAWILD_LEP](https://www.facebook.com/LAURAWILD_LEP)

A PROJECT to improve access to Lostock Valley in Leyland has received a funding boost.

The Veolia Environmental Trust has awarded the Ulnes Walton Bridleways Association a grant of £7,000.

The cash will go towards reinstating the currently unusable path, on Moss Side Playing Fields, by replacing its surface with 'Trotrec' – a recycled product which is suitable for use by horses, wheelchairs, pushchairs and walkers.

A drainage system, fencing and educational signing will also be installed in the area.

The improvements aim to transform the old bridleway into a multi-use track.

Chairman of Ulnes Walton Bridleways Association, Susan Taylor-Green, said: "We are delighted to have been award-

ed this grant by The Veolia Environmental Trust.

"The path will enable the whole community to enjoy the beautiful natural parkland which is currently inaccessible to wheelchairs, pushchairs and cyclists."

The acting executive director of The Veolia Environmental Trust, Maria Cade, added: "This project will make a real difference to the community of Leyland.

"The improved path will encourage physical outdoor exercise and engage local people with the environment.

"I look forward to seeing the completed results."

The Ulnes Walton Bridleways Association was formed in 2003 following the death of a horse on a road local to the project. The Association undertook to raise awareness of road safety issues in the area, to improve and extend off road routes and to educate equestrians on keeping safe.



Tweet us your news @leponline

6/8/13

Horse riding path project gets funding

By LAURA WILD
laura.wild@lep.co.uk
@GuardianLeyland

A project to improve access to Lostock Valley in Leyland has received a funding boost.

The Veolia Environmental Trust has awarded the Ulnes Walton Bridleways Association a grant of £7,000.

The cash will go towards reinstating the currently unusable path, on Moss Side Playing Fields, by replacing its surface with Troptrec – a recycled product which is suitable for use by horses, wheelchairs, pushchairs and walkers.

A drainage system, fencing and educational signing will also be installed in the area.

The improvements aim to transform the old bridleway into a multi-use track.

Susan Taylor-Green, chairman of Ulnes Walton Bridleways Association, said: "We are delighted to have been awarded this grant by



Sue Taylor-Green, front left, with other members of the association

whole community to enjoy the beautiful natural parkland which is currently inaccessible to wheelchairs, pushchairs and cyclists."

Maria Cade, acting exec-

utive, said the grant will make a difference to the community of Leyland.

"The improved path will encourage physical outdoor exercise and engage local people with the environment.

ways Association was formed in 2003, following the death of a horse on a local road.

The association aims to raise awareness of road safety issues in the area, to improve

Excitement grows as park plans take shape

Leyland
Guardian
24/9/13

By **KAY TAYLOR**
kay.taylor@lp.co.uk
@MissLeylandNews

A major regeneration scheme costing around £30,000 will see an area of Moss Side transformed into Leyland's 'next Worden Park.'

A huge project to create a children's play area, sports pavilion, football and rugby pitches, a large car park and cycle, bridle and walkways is gathering pace.

Community groups bidding for funding to redevelop the Moss Side Playing Fields into an open space set to rival Leyland's main park, have already been successful in attracting large pots of cash, and they have now revealed that the first lot of work is set to be complete by the end of the year.

Leyland Warriors Rugby Club is the main player behind the ambitious plans.

Chairman Phil Roberts said: "The scheme will really

improve the facility for the existing users of the fields, like the rugby teams, the horse riding club and the anglers, but it will also help to boost use by other groups, such as cyclists, football clubs, dog walkers and families.

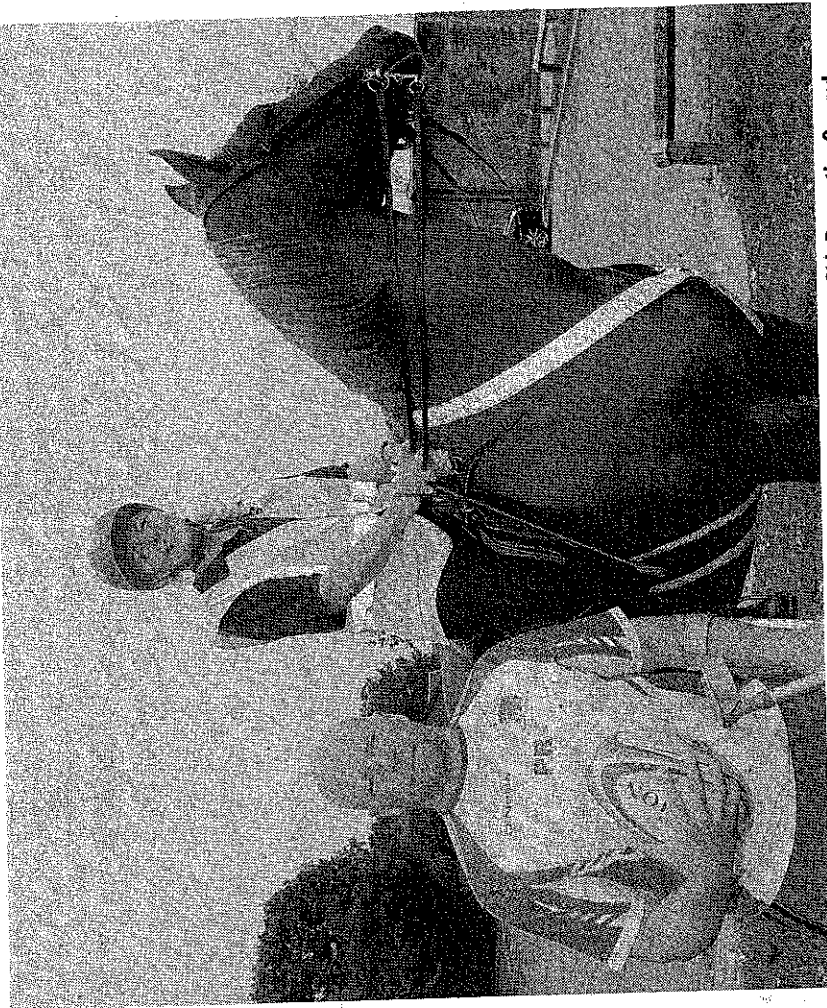
"The aim is to make the area more accessible to everyone, and with plans now in place for a children's play area to be built next year, Moss Side could become just as well used as Worden Park.

"It will be the kind of place where families come to spend the day."

At the moment, the site suffers from drainage problems, insufficient car parking provision, and poor sporting facilities.

The idea to make the much-needed improvements came about in February this year, when it was proposed through the Leyland My Neighbourhood Forum that the rugby club should be handed the reins to attract funding.

PICTURE: KEVIN MCGINNNESS



Phil Roberts, of Leyland Warriors RL Club, and Sue Taylor-Green on Beavis at Moss Side Recreation Ground

TURN TO PAGE 6

Improved park plans starting to take shape

FROM FRONT PAGE

The rugby club signed a 25-year lease with South Ribblesdale Council to take on the responsibility for improving the site in March.

Since then, the proposals have really progressed and funding has recently been secured from Sport England to create two new sport pitches at the site, in addition to the two existing ones, meaning that football clubs will also be able to use the facilities in future.

Mr Roberts hopes the improvements for the rugby teams can be implemented by March, and for the football pitches, by next September's season.

That part of the project has cost £49,000, and the next major job is to gain funding to expand the car park, at an estimated cost of £7,000, and build a new sports pavilion next year,

costing a massive £250,000.

Mr Roberts said: "The football pitches collapsed last year because of poor drainage, and the Leyland Tigers Junior Football Club had to leave Moss Side and start playing at Worden Park.

"We're hoping to be able to invite them back, as well as attracting other teams to the site, by September next year.

"The huge challenge for 2014 will be the sports pavilion.

"We have two changing rooms serving 12 teams at the moment, and it's very difficult. We also need more car parking, because there are sometimes 130 cars here at the weekend, and there are only 26 spaces.

"A lot of people park on the grass, which causes damage, or on nearby streets.

"Expanding the car park

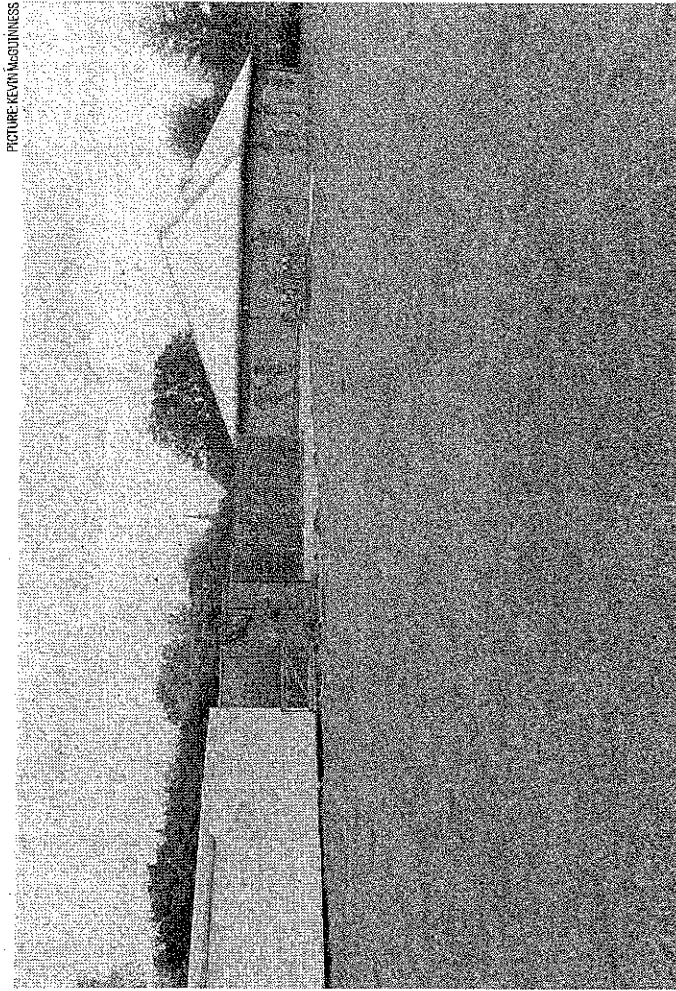
will reduce the amount of green space, but it will create a real benefit in the long-term for protecting the wildlife.

"We're hoping for 60 spaces, which will go some way to keeping our neighbours happy, and it will make a massive difference to the users of the site."

He added: "We are also in the process of drawing up a funding bid for a new children's play area, so that the brothers and sisters of the football and rugby players have somewhere safe and enjoyable to play during matches.

"It will also make Moss Side a place where families want to come, and I'm confident we will have that part of the project finished by spring next year."

"I'm really pleased it's all going so well," he added. "There are a number of projects going



PICTURE: NEVIN McGINNESS

The existing changing rooms at Moss Side Recreation Ground

on at once which is the key to getting things moving quickly.

"We don't want to miss out on any opportunities. This is really going to benefit the community as a whole."

Another group which is attracting funding and pushing for improvements in the area, which is off Moss Side Way, is the Ulmes Walton Bridleways Association.

Members have been successful in collecting a number of grants, worth £25,000, to

make paths around the site fit for purpose.

Chairman Sue Taylor-Green said: "Getting that money was a major step forward for us, because it means we can improve the bridleways path as well as the footpaths, which were in a bad state of repair.

"That will benefit all users of the park, including dog walkers and cyclists.

"We're hoping to complete that work by the end of November, and after that our plan is

to try to get more funding to extend all of the paths around the fields, so that a loop is created around the site."

She added: "Things really seem to be gathering pace now for the whole project.

"It sometimes takes years for this type of thing to take off, but I think once you get started and get one pot of funding, more follows because people see that it is a really viable and worthwhile scheme, and they want to support that."

24/9/13

Page 2.

Fancy dress for Halloween

29/10/13. Chorley + Kayland Guardian + LEP.

By KAY TAYLOR
 kay.taylor@jpress.co.uk
 @Missylandnews

The Ulmes Walton Bridleways Association held its annual fancy dress Halloween ride on Sunday.

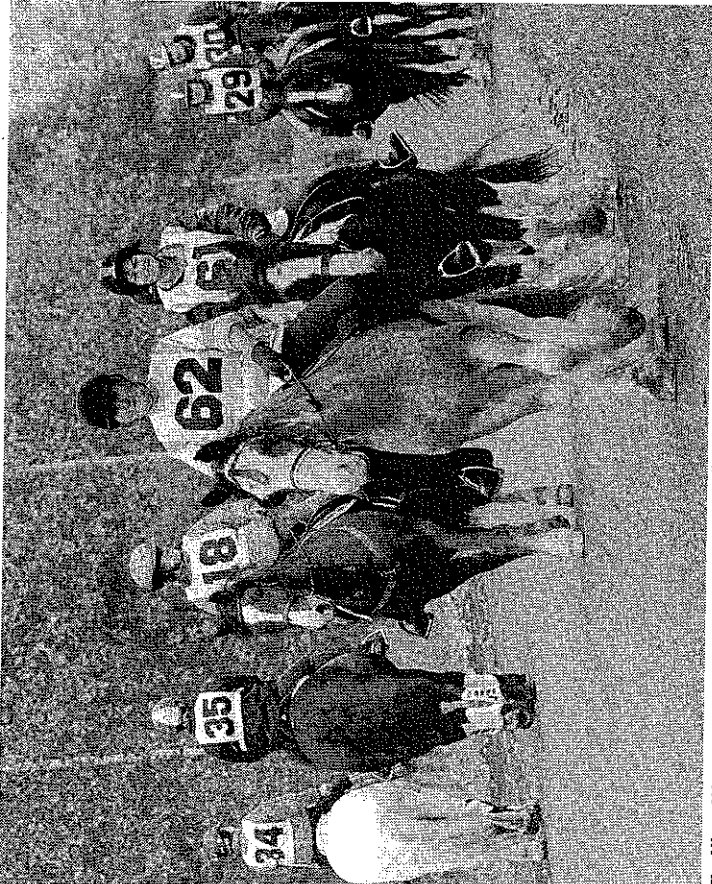
The group set off from Moss Lane at 9am and rode 12 miles around the Ulmes Walton area.

The event is organised to raise funds for the group, who put money back into the community by improving bridleways, footpaths and cycle routes around the area.

Members are currently helping to make much-needed improvements in the Moss Side Playing Fields in Leyland.



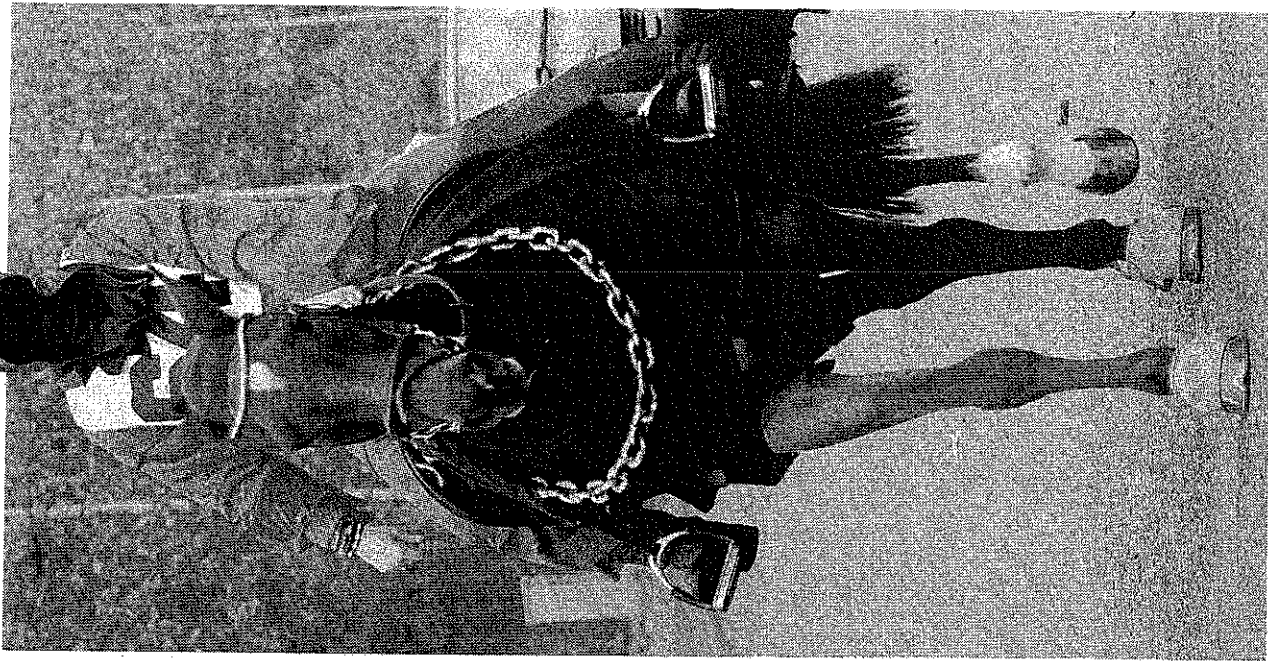
The Ulmes Walton Bridleways association's annual halloween horse ride



The Ulmes Walton Bridleways association's annual halloween horse ride

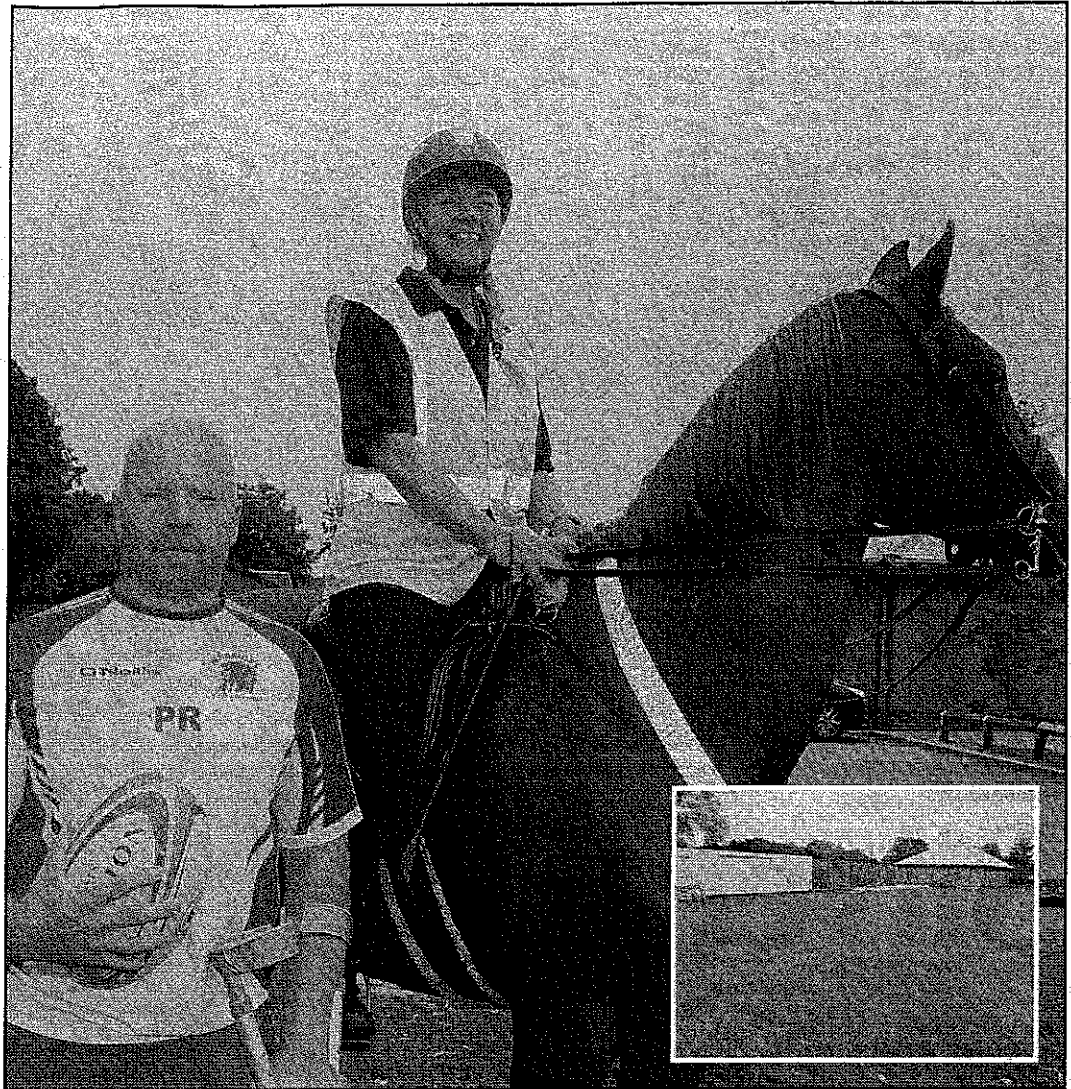


Fiona Connolly with Tilly



Kayleigh Holt with Bonnie on the Ulmes Walton Bridleways association's annual halloween horse ride

25/9/13



IMPROVEMENTS: Phil Roberts, of Leyland Warriors Rugby League Club, and Sue Taylor-Green on Beavis at Moss Side Recreation Ground (also pictured inset)

Park revamp gathers pace

By STAFF REPORTER
lep.newsdesk@lep.co.uk
@LEPONLINE

A MAJOR revamp will see an area of Moss Side transformed into Leyland's 'next Worden Park.'

The £330,000 project, which will create a children's play area, sports pavilion, football and rugby pitches, a large car park and cycle, bridle and walkways, is gathering pace.

Community groups bidding for funding to redevelop the Moss Side Playing Fields into an open space, have already been successful in at-

drainage problems, insufficient car parking provision, and poor sporting facilities. The idea to make the improvements came about in February this year, when it was proposed through the Leyland My Neighbourhood Forum that the rugby club should be handed the reins to attract funding.

The rugby club signed a 25-year lease with South Ribble Council to take on the responsibility for improving the site in March.

Since then, the proposals have progressed and funding has been secured from Sport England to create two new sport pitches. In

end, and there are only 26 spaces. We're hoping for 60 spaces, which will go some way to keeping our neighbours happy, and it will make a massive difference to the users of the site.

"We are also in the process of drawing up a funding bid for a new children's play area. I'm confident we will have that part of the project finished by spring next year. I'm pleased it's going so well."

Another group which is attracting funding and pushing for improvements in the area, which is off Moss Side Way, is the Ulmes Walton Bridleways Association. Members

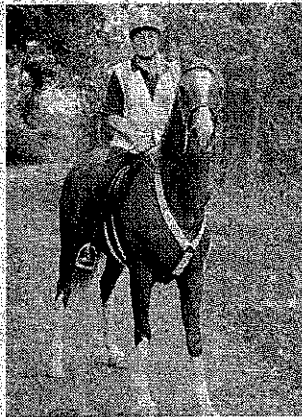
First phase of huge sports plan is nearing completion

Work to reinstate the bridleways around the Moss Side Playing Fields is expected to be complete by next month.

As reported previously in the Guardian, a huge project is underway to establish a number of improvements at the site, including creating better car parking and sporting facilities, as well as building a sports pavilion and a new children's playground.

The first phase of the work has been pushed forward by the Ulnes Walton Bridleways Association, which generated £25,000 for the work.

Cash came from the association's own fund-raising, as well as grants from the Veolia Environmental Fund, the Lan-



Sue Taylor-Green of the association

cashire Environmental Fund, South Ribble Partnership and the Harold and Alice Bridges Charity.

That work is set to be finished by the end of this year, and will pave the way for more use by cyclists and horse riders, as well as making it easier for people with prams and wheelchairs to access the site.

The next stages of the wider scheme are expected to take place throughout 2014, and funding is still needed for the car park, which needs more spaces, new football and rugby pitches, a sports pavilion and a play area.

The Ulnes Walton Bridleways Association now wants to get enough money together to extend the off-road pathways throughout the site, to create a route around the Moss Side and playing fields area.

Leyland Guardian 26/11/13